

# Recording Wildlife Near You

Project Evaluation

January 2012 – June 2013



Supported by

**The National Lottery**<sup>®</sup>

through the Heritage Lottery Fund



## **Aims**

Recording Wildlife Near You was a project run by Cambridgeshire and Peterborough Environmental Records Centre (CPERC) between January 2012 and June 2013. The overall aim of the project was to help engage local community groups in their natural environment through environmental recording.

By doing the above CPERC aimed to improve:

- Community engagement and understanding of local wildlife and to get younger people engaged with biological recording through volunteer groups and the help of local naturalists.
- The quantity and quality of species records held by CPERC for areas known to have fewer records (known as gap areas).

To do this CPERC planned to:

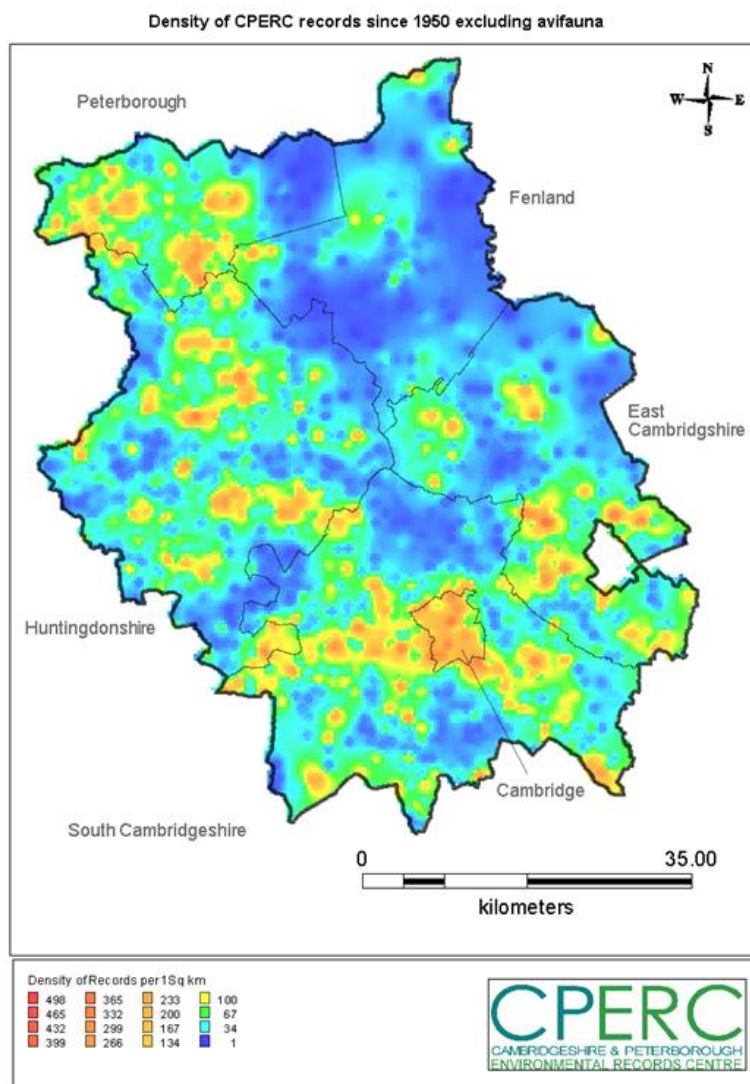
1. Recruit a Biodiversity Outreach Officer to deliver the 18 month project.
2. Recruit and train community groups in target areas across Peterborough and Cambridgeshire. Showing how to identify and gather quality information about species of interest.
3. Conduct training and surveys in order to encourage local people, especially the younger generation to learn about their local wildlife at a meaningful level.
4. Target species that were considered of particular importance or concern, including (but not limited to) the following:
  - a. Bats, Common Frog, Dragonflies, Great Crested Newt, Otter and Water Vole.
  - b. Australian swamp stonecrop, Creeping Water Primrose, Floating Pennywort, Giant Hogweed, Himalayan Balsam, Japanese Knotweed.

In the longer-term CPERC anticipated this would:

- Empower local people to feedback records and help engage them in the measurement of the natural environment on their doorstep, encouraging them to value and want to care for it.
- Help conserve and enhance local heritage through the improvement of information about local biodiversity. This in turn would improve the ability of decision makers to act on evidence with more certainty.

## Background

CPERC had already addressed the need to acquire more records from poorly recorded parts of the county, after performing an analysis of our post-1950 records (excluding bird data which are considered to provide a broad spread of records due to their accessibility as a group) and it was clear from the map of this analysis, below, that there were specific parts of the county where, if we had a targeted project, we could make a real difference to our knowledge and at the same time recruit more people to structured wildlife recording.



Via the use of county experts and charismatic groups of species, we were able to target four parts of the county to prioritise, whilst aiming to reach as many people as possible with the general wildlife recording message. These areas were deliberately chosen to not be the most affluent parts of the county, which happened to co-incide with our areas of poor recording.

Whilst focussing on these areas, especially for our core activities, our work was not restricted to them, and events were attended and groups and individuals reached across the whole of Cambridgeshire & Peterborough

## The Project

### 1). Recruiting a Biodiversity Outreach Officer

Jane Andrews – Gauvain was recruited to the role of Biodiversity Outreach Officer on 16<sup>th</sup> January 2012 and managed the project until 2<sup>nd</sup> June 2013.

### 2). Target areas of the county

We decided initially to focus on four areas. Due to various logistics and volunteer take-up issues, this changed slightly during the project. Initially we chose Isleham, Somersham, March and eastern Peterborough as our target areas. The reasons behind the first two listed localities were the presence of LNRs owned and managed by the County Council environment and community teams, and affiliated Friends groups already in existence. The hope was to use these groups and broaden their knowledge and sites within their local area. This proved to be extremely difficult to do and input into these groups waned after the first few months. As compensation, more focus on the far north of the county was included, and as well as the eastern parts of the Peterborough Unitary area, and March we also started events and developed volunteers in several of the small settlements from Peterborough across to Wisbech, including Thorney and Parsons Drove. The pre-existing Wildlife group in March proved a very good starting point for several of our activities – this group had a woodland Trust site as their main focus, but the town also possesses a Wildlife Trust reserve and an LNR lacking at the outset a friends group – we were able to take this group out from their existing small site to cover a wider range of sites and species in the March area.

Talks were given and groups were targeted in other parts of the county, especially during the autumn/winter indoor meeting season, to take the message of wildlife recording out to as wide an audience as possible.

An example of our approach – finding ponds for surveying amphibians and dragonflies 2012:

Jan/Feb: Using pond GIS layer from CPERC Office, a previous local authority project, I looked at systematically working from the north southwards across the county, looking at ponds most suitable for surveying for frog/toads, newts and potentially dragonflies.

Criteria for suitable ponds depended on:

- Easy access for volunteers (near to road/access point)
- Not on private farmland/ CWS
- Suitable scrub habitat nearby for cover for species

As time progressed, I searched areas

- closest to where groups and volunteers were starting to become available
- any LNR reserves with few records known
- near to public footpaths/byways and where I could travel to easily (reduce travel costs).

Contact at least 5 landowners for survey sites and obtain permission to survey

One of the real hurdles was tracing landowners using this route. Inevitably, our choices became based on land owners with whom we made contact through a variety of routes such as local authority tenant farmers, friends of trainees, etc.

### 3) Volunteers

We recruited volunteers initially through pre-existing contacts within local authority community teams, wildlife trust community contacts and groups known to CPERC. Several of our target areas had LNRs with 'Friends groups' active within a small site, often on management work rather than wildlife recording but not always, or with similar groups focussed on a small site or a narrow wildlife outlook. We contacted local wildlife trust groups, watch groups and similar, and also spread the net in our geographic area more widely by issuing press releases, contacting other groups with an outdoor interest, such as Parish councils, Womens Institute groups, Anglers and others.

We used our networks of contacts, and those listed above, to spread the word more widely. During the project, various events were attended, to spread the word on Wildlife recording, publicise our events and the principles of recording, and engage as wide an audience as possible. The annual Peterborough Green festival and Cambridge Natural History Society's Annual Conversazione were attended, as were other specific events. During the project we set up a facebook page, which remains active, to promote our community activities, news items and other things of interest to our volunteers and anyone else engaged through social media.

Appendix 1 summarises the publicity events we attended and the people engaged, Appendix 2 summarises talks given to specific local groups and similar, excluding youth or school groups.

### 4) Experts and resources

Finding local experts to lead training days in areas where Jane Andrews-Gauvain, the project officer lacked the relevant knowledge was straightforward – several key local experts were happy to give their time and skills to encourage and teach new recorders. A more significant challenge was arranging access to some areas away from reserves – usually the kind of areas where we have few records anyway. However, several farmers came forward through the project, increasing markedly in the second summer, to allow groups access to their land to survey. This increase in the second summer was in part due to the co-operation from the RSPB fenland farming project and from Co-operative farms.

To test our field methods, we carried out an initial test run using CPERC staff and volunteers, on a recording day on farmland close to March. This gave us the opportunity to test the ideas that people who may or may not have ID skills in any particular species group can be taken on a day recording and safely gather valuable data. The trial farmland had a network of drains which we were able to study, and a barn and part of a major fenland waterway, the Twentyfoot river. This enable us to see the ease with which we could look for key species such as Water Vole, Otter, Barn owl, invasives, and other general wildlife in the wider, farmed landscape. It also gave us the opportunity to check that we had the relevant risk assessments, safety issues addressed, etc. in anticipation of real events.

From the outset we were aware that it is important to keep the interest of interested new volunteers, during a recording/training day, and after that initial contact through other training days and events, and into the future. Hence, it was important to have experts present who could cover the target species, and other species as dictated by the conditions sufficient to keep trainees interested and returning. The value of wider countryside has always been questioned in this regard, but our belief is that it can be easier to learn a few target species in a less biodiverse environment than to feel swamped as a beginner in a species-rich habitat. This can actually be a barrier to effective volunteer training and retention.

Our initial target species groups were decided based upon the kinds of species for which we are most often asked for information on, and which may well be present in the wider fenland landscapes. There were, however, other very important factors in species group choice; charisma of the species, identification without costly equipment, identification without risk to observer. The kinds of species which we felt fell into this category were Water Vole, Otter, Amphibians & Reptiles, Bats, Dragonflies, Butterflies, plants, especially the non-native invasives. Careful choice of species groups enabled us to hold training days for a long season. Additional species groups were included on occasions based on the interests of the group, the prevailing habitat/conditions and the availability of trainers. The opportunity to involve volunteers in national surveys also arose, with the British Trust for Ornithology's Winter Thrush survey, a very straightforward participation survey for which good training materials were supplied, and participation at a site of your choosing was possible. This was valuable in filling the mid-winter period when other training opportunities were sparse, and also in showing how straightforward nationally important surveys can be.

Appendix 3 lists the volunteers/trainees recruited throughout the project. Appendix 4 shows all of the training events run and the numbers attending.

Having a simple resource that training participants can take away is a very valuable output for any training course – a field sheet which volunteers can keep for future use to enable them to continue to record is vital for any field naturalist. We produced several ID sheets, which were available to our volunteers, and some of which we have been able to make available via our website for anyone to use.

We have also developed a set of resources to use at public events – ways of attracting the attention of passers-by, and then engaging them in conversations about wildlife, its importance and the value and simplicity of recording it. Some simple recording quizzes and games such as protected species 'Top trumps' have also proven invaluable in engaging different audiences, especially slightly younger ones such as Woodcraft or youth groups. Whilst the low level of recruited trainees from this age sector is undeniable, formative knowledge is often acquired through one-off engagement at events or activity evenings, leading to increased awareness of their environment and maybe a return to natural history later in life. Appendix 5 shows the school/youth group visits & talks carried out.

## 5) Recording

The tools we provided to enable volunteers and trainees to record varied, depending on the individuals. At its simplest, we provided paper recording forms with examples for people to fill in;

having supplies of these at public events and talks is a good starting strategy. The obvious next refinement of this is the electronic format, a spreadsheet, on which the blank paper version was based. Many trainees proved able to use this for their recording sessions on their own. This recording form is available permanently on our website, as is a form for submission of a single record. A refinement which proved more popular, however, was the 'Googledocs' version of the recording sheet. The use of real-time online spreadsheets such as these, which require an internet connection but no software on a computer proved popular; an individual can log on to their own sheet whenever they wish and add records, and CPERC can download the records whenever we wish, and get notified when records added, giving us an indirect, real-time measure of who is recording.

As well as creating new pages on our existing website to cover the project, where we house resources and publicised events and training opportunities, we also started a CPERC facebook, initially specifically for the project and to promote our outreach work, and additionally to advertise events by others which are also relevant to our recording community. CPERC continues to maintain this site with regular postings relevant to our recording community, on key species at the time, training opportunities, events, etc.

Appendix 6 maps the records by parish from the events and also individually by trainees away from event days, clearly illustrating that many of our records make a start at plugging the gaps in our knowledge of the under-recorded parts of the county.

#### 6) Other activities

Away from the core recording areas we also decided to begin to spread the recording discipline through staff and volunteers within the Wildlife Trust. Although some of the staff are formidable naturalists in one or more area of wildlife, not everyone in a Wildlife Trust has the recording bug. We decide to use the Googledocs spreadsheet and add a competitive edge to a Wildlife Trust recording challenge 2013. The main challenge was "Could any or all staff beat Brian?" Brian Eversham, the CEO of Wildlife Trust BCN, is one of the most knowledgeable naturalists in the county, and we decided to take him on, as all staff, as departments within the trust, and as individuals. To provide suitable incentives, we had awards for the best office novice, best non office novice, (as the trust have staff and volunteers at several reserve-based sites), team challenge. Many members of staff made their first wildlife records through our encouragement. One stunning recruit to recording stemmed from this event, a teenager who will undoubtedly go on to be one of the next generations naturalists. As well as being a volunteer at the Great fen project, he attended one or two of our recording days and won the non-office novice, with an impressive set of records across very diverse species groups from slugs and snail, beetles, butterflies and vertebrates such as amphibians and mammals.

We also attended and helped co-ordinate the species tally for the Great Fen Bioblitz in July 2012. As well as many county experts, activities were held for the general public. Such events and our participation are vital to the development of new recorders.

## 7) What was difficult?

Contacting landowners to get them interested in this project was never going to be straightforward, and this aspect took time to develop, although in the second summer season, the RSPB's fenland farming project proved invaluable in providing survey sites and this partnership continues since the project has ceased. Initially, surveys were carried out on land owned by local authorities, LNRs and similar local accessible sites – these are always invaluable places, as although sometimes moderately well recorded, it is not always true. One of the causes behind this is the perception that granting access to a survey group is the first step in allowing open, public access to farmed land, a very difficult prejudice to break. We would like to thank the farmers with a more enlightened approach who allowed access to their land for surveys, and who took an interest in our project and the findings of recording days.

Another area which we always knew would not be straightforward was the issue of providing remuneration to our experts. Most of these were local naturalists with a real passion for their specialist area of wildlife, and have great knowledge and the ability to pass on skills and knowledge to others. However, they were nearly always reluctant to accept or claim for any mileage or remuneration for time. This is an important factor, as it was felt we needed to offer our experts remuneration as were often persuading them to travel a way from their usual area. The offer of payment was always acknowledged but refused on most occasions, as they wanted to give their time to the project.

## Outcomes

During the project we clearly mobilised an interest amongst people in the target areas of the county to become more involved in recording wildlife. However, maintaining this legacy with no direct involvement from a project officer is something which has invariably proven much more challenging.

We believe that most of our most engaged cohort of recorders has stayed connected with us through our use of social media and emails about events and chances to record. However, maintaining the input of records is exceedingly difficult without regular reminders from CPERC staff, and time pressures on the other CPERC staff since the cessation of this project mean that this is often a very difficult priority to achieve amongst the rest of our regular workload.

The project officer moved to a similar post with the RSPB working with Fenland farmers, in the same core geographic area as our project, and we have worked closely, retaining the same group of volunteers with their events rather than ours, but with the data feeding in to us to utilise as part of our work. This has helped with some of the pressures of organising and maintaining the impetus of contact which is clearly needed, but we need to continue to address this through 2014. We anticipate that CPERC will have some staff time to continue to build and maintain links with this recording community, through specific events and general recording information.

A core of around a dozen dedicated individuals have broadened their natural history knowledge, gained lots of ID skills and still use our recording system to provide valuable data, and others often take part in organised events when they are able to. It is clear that in reality, a longer period of guidance and mentoring is actually needed for amateur recorders to gain the confidence to become independent naturalist/recorders, but CPERC aims to provide as much support as is possible without specifically funded posts available to keep these recorders interested and participating.

We hope to run more small projects in 2014 and 2015, as many as possible will be available to this cohort of volunteers, and others. We have also posted many of the training resources on our website for free download, or links to relevant recording websites where additional ID help can be obtained, in a move to make as much of our training and ID resource created during the project available to anyone who wishes to use it. These can be found on our website at the following links: <http://www.cperc.org.uk/about-us/publications.php>. Additionally, the Recording Wildlife Near You pages of our site will be updated to reflect the conclusion of the project. This report will also be posted at that location, with approval of HLF.

## SUMMARY

In total we held 90 specific recording events or talks, as well as attending larger events for publicity purposes, engaged with 243 potential new recorders and generated 5569 validated records to the end of the project.

Appendix 1 summarises the publicity events we attended and the people engaged.

Date	Event	District	Place	Number attending	Trainers/ Helpers	Activity Times	Total Vol Hours	Total Trainer Hours
22/03/2012	Meeting - Introduction	Fenland District	March, Middle Level Commissioners	23	2	19.00 - 21.30	55	5
02/06/2012	Open day - Green Festival	Peterborough	Cathedral Square, Peterborough	70+	N/A	10.00 - 16.00	N/A	N/A
21/07/2012	Open day/meeting - Woodwalton Fen Bioblitz	Huntindon District	Woodwalton Fen	100+	N/A	09.00 - 17.00	N/A	N/A
07/08/2012	Open Day - 'Bug hunt'	Fenland District	March, Gault Wood	66	1	18.00 - 20.00	132	3
15/02/2013	Cambs Bat Talk - engagement	Fenland District	March	15	N/A	19.30 - 21.00	N/A	N/A
20/04/2013	Open day - Buglife	Peterborough	Ferry Meadows, Peterborough	38 (adults), 25 children engaged, 16 (adults), 3(children) looked	1	10.30 - 16.00	N/A	5.5

25/05/2013	Meeting / engagement - Green Festival	Peterborough	Cathedral Square	Engaged <10yrs(32), 10- 18(21), 20(7), 30(16), 40(14), 50(20), 60(19), Looked <10(1), 10- 18(2), 20(5), 30(4), 40(7), 50+ (10)	N/A	09.00 - 16.00	N/A	N/A
02/06/2013	Engagement / survey - WV & General	Fenland District	Ringsend	61+	N/A	10.00 - 12.30	N/A	N/A
09-10/06/2013	Open Farm Sunday - Engagement	Peterborough	Thorney	22+	N/A	Sat & Sun 10.00 - 16.00	N/A	N/A
14-15/06/2013	Meeting - Conversazione	Cambridge City	Zoology Museum	20+	N/A	Fri 13.00 – 18.00, Sat 10.00 – 17.00	N/A	N/A
26/06/2013	Celebration event	Fenland District	Middle Level Commissioners	approx 20	N/A	18.00 - 20.00	N/A	N/A

Appendix 2 summarises talks given to specific local groups and similar, excluding youth or school groups.

Date	Event	District	Place	Number present	Trainers/Helpers	Event times	Total Vol Hours	Total Trainer Hours
08/02/2012	Meeting - Huntingdon Local Wildlife Group	Huntingdon District	Brampton	not recorded	N/A	19.30 - 21.30	N/A	N/A
09/02/2012	Meeting - Peterborough Local Wildlife Group	Peterborough	St Andrew's Church	not recorded	N/A	19.30 - 21.30	N/A	N/A
16/03/2012	Meeting - Ely Local Wildlife Group	East Cambridgeshire District	Ely	not recorded	N/A	19.45 - 21.30	N/A	N/A
19/03/2012	Meeting - Isleham Local Wildlife Group	East Cambridgeshire District	Isleham	not recorded	N/A	19.30 - 21.00	N/A	N/A
04/04/2012	Meeting - Introduction & Training - Amphibians /Water Vole	Huntingdon District	Somersham Town Hall, bad weather, so indoors	3	N/A	14.00 - 16.30	7.5	N/A
16/04/2012	Meeting - Invited to event - Engagement Houghton Bioblitz	Huntingdon District	Houghton Bioblitz	3	N/A	19.00 - 21.30	7.5	N/A

01/10/2012	Landbeach PC mtg	South Cambridgeshire District	Landbeach Village Hall	not recorded	N/A	19.00 - 20.00	N/A	N/A
08/10/2012	Christchurch PC mtg	Fenland District	Christchurch	not recorded	N/A	19.00 - 20.00	N/A	N/A
29/10/2012	Wisbech Town Council mtg	Fenland District	Wisbech	not recorded	N/A	19.00 - 19.45	N/A	N/A
05/11/2012	Wisbech St Mary PC mtg	Fenland District	Guyhirn	not recorded	N/A	19.30 - 19.45	N/A	N/A
06/11/2012	Stretham PC mtg	East Cambridgeshire District	Stretham	not recorded	N/A	19.30 - 19.45	N/A	N/A
07/11/2012	Witchford PC mtg	East Cambridgeshire District	Witchford	not recorded	N/A	19.30 - 19.45	N/A	N/A
13/11/2012	Natural Woodhurst mtg/training	Huntingdon District	Woodhurst	not recorded	N/A	19.00 - 20.30	N/A	N/A
14/11/2012	Cambridge & Peterborough Amphibian- and Reptile group	South Cambridgeshire District	Cambourne	not recorded	N/A	19.00 - 21.30	N/A	N/A

19/11/2012	Manea & Doddington PC mtg	Fenland District	Manea & Doddington	not recorded	N/A	19.00 - 21.30	N/A	N/A
20/11/2012	Elm PC mtg	Fenland District	Elm	not recorded	N/A	19.00 - 21.30	N/A	N/A
04/12/2012	Benwick PC mtg	Fenland District	Benwick	10	N/A	19.00 - 20.00	10	N/A
25/01/2013	Whitehall Farm mtg	Huntingdon District	Pondersbride	1	N/A	10.00 - 12.00	2	N/A
29/01/2013	Croxton PC mtg	Huntingdon District	Croxton	6	N/A	19.30 - 20.15	4.5	N/A
31/01/2013	Meeting - Introduction Greener Futures/Warboys PC - Amphibians	Huntingdon District	Warboys	11+	N/A	19.30 - 21.00	16.5	N/A
02/02/2013	Meeting - W.I. Cambridge Federation (amphib training)	South Cambridgeshire District	Girton	25+	N/A	10.00 - 13.00	75	N/A
04/02/2013	Meeting - W.I. Ely Federation (amphib training)	Fenland District	March	50+	N/A	10.00 - 12.00	100	N/A

13/02/2013	Parson Drove PC mtg	Fenland District	Parson Drove	6	N/A	19.15 - 19.45	3	N/A
20/02/2013	Whittlesey Street Pride mtg	Fenland District	Whittlesey	12	N/A	19.30 - 20.30	12	N/A
21/02/2013	Meeting - CPARG/CPERC Amphibian talk for CNHS	Cambridge City	Anglia Ruskin University, Cambridge	50+	N/A	19.30 - 21.30	200	N/A
26/02/2013	Thorpe Meadows - Mtg/amphib	Peterborough	PECT Office, Midgate, Peterboroug h	10	N/A	19.30 - 21.00	15	N/A
08/03/2013	Meeting - Thorney Farmers	Peterborough	Eye	15	N/A	19.00 - 21.00	30	N/A

Appendix 3 Lists the volunteers/trainees recruited throughout the project.

Alan Blunden	Gemma Latus	Lizzy (friend of Lizzy) Edson	Spencer Holland
Alan Palmer	Genevieve Madgwick	Luke Welch	Steve & Wife Basford
Alan Roberts	Helen Kearney	Malcolm West	Sue Welch
Andy Latus	Helen & Terry Moore	Maria Bartlett	Susan Quail
Angela Naylor	Isabel Edgington	Mick Knight	Susan Wilson
Anita Joysey	Jackie Bodimead	Mo Reeves	Terry Rogers
Annie Reeves	Jamie Robins	Frank Gormley	Tom Wiley
Antony Mould	Jan Orchard	Mr Warrington	Tom Beckmann
Antony Mould's partner	Janet Brooks	Nigel Cooper	Cadell Beckmann
Avinasho Stacey	Jeanette Milner	Olivia Maes	Tony John
Becky Masterson	Jeff Warren	Pat Doody	Tracey Kay
Bill Needham	Jenny Mosley	Pat Middleton	Veronica Wood
Brenda Smith	Jenny Spriggs	Pat Roberts	Phil Clark
Melvyn Smith	Jessica Hatchett	Patricia Rogers	Will Burdett
Catherine Mitchell	Joan Munns	Paul McCloskey	Sophie Burdett
Chris Fletcher	Joanne John	Peter Bone	Judith Turner
Chris Harvey	John Claydon	Peter Pilbeam	James Fisher
Chris Holt	John Cornell	Phil Norton	Elaine Wilkinson
Chris Sykes	John Spriggs	Phil Ricketts	Martin Pride
Chris Wright	Joscelyne Ashpole	Pippa Keynes	Anne Costello
Claire Huntley	Josephine Fried	Rachel Christmas	Neil Costello
Clare Dinham	Kathy & Husband Hadfield-Moorhouse	Ramona Lilley	Peter Foglietta
Clive Baker	Ken Banks	Ray Pritchard	Alice Mitchell
Dale Batterby	Laura Jones	Rebecca Neal	Paul Furnborough
David Cudby	Laura Jones' Friend1	Richard Munns	Andrew Slater
David Freear	Laura Jones' Friend2	Richard Cheverton	Judy Stroud
David Reeves	Leah Johnson	Rachel Cheverton	Michelle Lee
Deb Hellett	Leonard Moore	Richard Braund	Mark Oliver
Deirdre Carter	Les Heaton	Robert Day	Bob Hodgson
Mary (friend of Deirdre)	Lewis York	Rosemary Surridge	Jeanette Malkin
Diane Devanche	Linda Berube	Roy Thacker	Alan Bennett
Dorothy Ball	Liz Wright	Sally Radnor	Frank Hughes
Elaine Harvey	Lizzy Edson	Sinead Calnan	Paul Baker
Elizabeth Jones	Fran Edson	Soraya Jeffries	Jo Baker



Supported by  
**The National Lottery**<sup>®</sup>  
through the Heritage Lottery Fund



Danielle Huggins  
James Huggins  
Con Carey  
Adrian Hoyle  
Bill Swann  
Vicki Simpson  
Max King  
Clare Marshall  
Christopher Parsons  
Jill Murdoch  
Tony Weston  
Beatrice Chan  
Marissa Ryland  
Sandra Mortlock  
Tony  
David Prebble  
Jackie Prebble  
Victoria Stoneman  
Amanda Caldwell  
Mick Twinn  
Natalee + friends Ryan  
Claire Perrott  
Rachael Garner  
Rachel Price  
Aaron Garner  
Melanie Hale  
Andrew Stevens

Margaret Mortimer  
Frances Dipper  
Chris Horne  
Robert Humphrey  
Nicolas Andrews-Gauvain  
Raymond Cross  
Andy Murray  
Roger Wilkin  
Tina Wilkin  
Chris Goldsmith  
Gavin Young  
Neville diver  
Karen Williams  
Roger Miller  
Anita Richards  
Gilbert Smith  
Jill Howell  
Mark Gagoms  
Tim Beddoes  
Luca Doria  
Debbie Huckle  
Patricia Merrett  
James Merrett  
Vanessa Amaral-Rogers  
Paul Fretwell  
Deborah Marchant  
Mandy Orchard

Rod Mulvey  
Jackie Parr  
Jill Free  
Elisabeth Zöttl  
Elizabeth Mitchell  
Harriet Mitchell  
Sarah Mardon  
Albert Horton  
Philip Brown  
John Scrimshaw  
David Johnson  
Mrs Janet Herbert  
Mrs Catherine Myland  
Mr Andrew Jacobs  
Mr Nick Harris  
Mr Martin Stuffins  
Mr Peter Stuffins  
Mr Gary Cade  
Stuart Cade  
Heather Cade  
Mr Tony Jarvis  
Charles Allens  
Courtney Allens  
Debbie Hunt-Pain  
Roger Hunt-Pain  
Michael Sly  
Philip Bradshaw

Angela Heyes  
Amanda Bakewell  
Rebecca Catell  
Heather Ballard  
Hollie Kent  
Jonathan Shanklin  
Wendy Catell  
William Seale  
David Seilly  
Anne Green  
Lynn Briggs  
Susan Bird  
Adrian Lyszkowski  
Paul Lucas  
Denise Artus  
Mike Hallett  
Dave Woricker  
Liona Woricker  
Karen Wells  
Alan Dixon  
John Holden  
Ruth Potts  
Tessa Cathcart  
Lesley Bond  
Al Bond  
Vince Lea

Appendix 4 shows all of the training events run and the numbers attending.

Date	Event	District	Place	Attendees	Trainers /Helpers	Event times	Total Vol Hours	Total Trainer Hours
22/07/2012	Survey - invasive species, volunteers on own	Peterborough	Thorney River	2	0	09.00 - 17.00	15	0
26/07/2012 & 20/10/2012	Survey - invasive species & water vole & otter, volunteers on own	Peterborough	Cats Water Drain	2	0	09.00 - 17.00	30	0
01/08/2012	Survey - invasive species, volunteers on own	Peterborough	1-2 Pole Drove & Kings Delph	2	0	09.00 - 17.00	15	0
05/08/2012	Survey - invasive species,volunteers on own	Peterborough	Cats Water Drain	2	0	09.00 - 17.00	15	0
08/08/2012	Survey- invasive species volunteers on own	Peterborough	Delph Dike	2	0	17.00 - 18.30	3	0
11/08/2012	Survey - invasive species, volunteers on own	Huntingdon District	Yaxley Lode	4	0	09.00 - 17.00	30	0
13/08/2012	Survey - invasive species, volunteers on own	Peterborough	Pigswater	2	0	09.00 - 17.00	15	0

05/10/2012	Survey- invasive species & water vole/otter, volunteers on own	Peterborough	Carr Dyke	2	0	17.00 - 18.00	2	0
06/10/2012	Survey - water vole & otter, volunteers on own	Peterborough	1-2 Pole Drove & Kings Delph	2	0	09.00 - 17.00	15	0
07/10/2012 & 14/10/2012	Survey - invasive species, volunteers on own	Peterborough	Kings Dyke	2	0	09.00 - 17.00	30	0
11/10/2012	Survey - invasive species & water vole & otter, volunteers on own	Peterborough	Carr Dyke	2	0	10.00 - 13.00, 14.00 - 16.30	11	0
03/11/2012 & 28/04/2013	Survey - water vole & otter, volunteers on own	Huntingdon District	Yaxley Lode	4	0	09.00 - 17.00	30	0
31/05/2013	Recorders Day	Peterborough	Thorney	12	0	10.00 - 16.00	72	0
15/03/2012	Landowner - Training / survey - water vole (CPERC)	Fenland District	March, Flaggrass Farm	5	0	10.15 - 16.00	28.75	0

23/03/2012	Engagement & training / survey	East Cambridgeshire District	Soham Lode	2	0	10.00 - 12.30	5	0
23/03/2012	Engagement & training / survey	East Cambridgeshire District	Ely, Branch Bank	2	0	15.00 - 16.30	3	0
24/03/2012	Training / survey - amphibians	Fenland District	March, Gault Wood and Several drains nr March	9+ [AM & PM (9), AM only (6), PM & eve (1)]	1	through day - three sessions	71.5	3.5
02/04/2012	Training / survey - amphibian & water vole/otter	Fenland District	Wisbech, Clough's Cross	5	0	10.00 - 16.00	20	0
21/04/2012	Training/survey - Reptiles	Peterborough	Woodston Ponds	12	2	10.00 - 12.00	24	4
28/04/2012	Training/mtg - Guided Tours/Walks	Fenland District	Ringsend LNR	10	1	10.00 - 12.00	20	2
02/05/2012	Landowner - training / survey	Fenland District	Wimblington, Hook House	6	0	18.45 - 20.45	12	0
05/05/2012	Training / survey - Butterflies	Huntingdon District	St Ives, Woodhurst	1	1	11.00 - 15.00	4	4

09/05/2012	Training / survey - Butterflies	Fenland District	Gault Wood, March	3	1	10.30 - 13.00	5	2
13/05/2012	Training / survey - Butterflies	Peterborough	Thorney	1	0	11.00 - 13.30	2.5	0
16/05/2012	Training / survey - Butterflies	East Cambridgeshire District	Isleham Nature Reserve	2	0	10.00 - 12.00	4	0
24/05/2012	Training engagement / Survey	South Cambridgeshire District	Landbeach, Worts Meadow	10	1	17.00 - 20.00	30	3
06/06/2012	Training / survey - Spiders	Fenland District	March, Gault Wood	8	1	11.00 - 16.00	33	5
07/06/2012	Training / survey - Spiders	Peterborough	Thorney	2	1	11.00 - 15.00	8	4
14/06/2012	Training / survey - Bats	Fenland District	March Town	9	1	20.45 - 21.45	9	1
21/06/2012	Training / survey - Spiders	East Cambridgeshire District	Barway	2	1	11.00 - 16.00	10	5

10/07/2012	Training/mtg - Guided Tours/Walks	Fenland District	March, Gault Wood	10	0	18.30 - 20.30	20	0
13/07/2012	Training / survey - general	Fenland District	Christchurch	1	0	18.00 - 19.30	1.5	0
14/07/2012	Training / survey - general	Huntingdon District	Kings Ripton	1	0	10.00 - 15.30	5.5	0
17/07/2012	Training - water vole, otter & invasive species	Peterborough	Hampton Reserve	14	2	18.00 - 22.00	56	8
18/07/2012	Training/Survey - Dragonflies/general	East Cambridgeshire District	Witchford pub footpath	2	0	18.00 - 20.30	5	0
22/07/2012	Training / survey	East Cambs District	Isleham, Broadhill Drove	0	0	N/A	0	0
23/07/2012	Training / survey - water vole & invasive	Fenland District	Ringsend LNR	9	1	18.00 - 20.30	22.5	2.5
24/07/2012	Training /survey - Dragonflies/general	Fenland District	Doddington, Turf Fen	4	0	18.00 - 20.45	11	0
29/07/2012	Training /survey - Dragonflies/general	Fenland District	Gorefield, Elbow Bank	2	0	10.00 - 16.00	12	0

30/07/2012	Training / survey - water vole & invasive	South Cambridgeshire District	Rampton	4	0	10.00 - 16.00	24	0
05/08/2012	Training / survey - dragonflies & butterflies	Huntingdon District	Bluntisham, Little London	2	0	10.00 - 16.00	12	0
12/08/2012	Training / survey - dragonflies & butterflies	East Cambridgeshire District	Mepal, Ouse Washes	0	1	10.00 - 15.00	0	5
13/08/2012	Training / survey - dragonflies & butterflies	Fenland District	Chain Bridge (Whitemoor)	2	1	13.30 - 16.30	6	3
16/08/2012	Training / survey - general	East Cambridgeshire District	Isleham, Little Wash	6	0	18.00 - 20.30	14	0
18/08/2012	Training / survey - general	Fenland District	Wisbech, Guyhirn	1	0	10.00 - 16.30	6.5	0
19/08/2012	Training / engagement survey	Peterborough	Thorpe Meadows	13	0	10.00 - 13.00	39	0
21/08/2012	Training / survey - aquatic plants	Peterborough	Northey Wash	4	1	18.00 - 20.30	10	2.5

23/08/2012	Training / survey	Huntindon District	Warboys	0	0	cancelled	0	
09/10/2012	Training / survey - invasive plants	Peterborough	Old Nene Course	2	0	14.30 - 16.00	3	0
09/10/2012	Training / survey	Fenland District	Norwood Road Reserve, March	7	0	17.00 - 19.30	17.5	0
20/10/2012	Training / survey - Fungi	Fenland District	Gault Wood, March	9	1	10.30 - 13.30	27	3
26/10/2012	Training / Survey - water vole/invasive	Peterborough	Old Nene Course	1	0	13.00 - 17.00	4	0
27/10/2012	Training / survey - Fungi	Huntingdon District	Holme Fen	6	1	10.30 - 13.30	18	3
03/11/2012	Training / survey - Birds	Peterborough	Newborough	1	0	09.45 - 12.30	2.75	0
03/11/2012	Training / survey - Birds	Peterborough	Thorney	2	0	13.30 - 16.15	5.5	0
07/11/2012	Training / survey - Birds	Fenland District	Coates	2	0	09.45 - 12.30	5.5	0
07/11/2012	Training / survey - Birds	Fenland District	Doddington	5	0	13.30 - 16.30	15	0

10/11th Nov	Training /survey - Small Mammals	Fenland District	Gault Wood, March	13	1	15.00 - 16.30, 08.00 - 10.00	37	3.5
14/11/2012	Training / survey - Birds	Fenland District	Leverington, Wisbech	1	0	10.00 - 13.00	3	0
14/11/2012	Training / survey - Birds	Fenland District	Leverington, Wisbech	1	0	13.00 - 16.00	3	0
17/11/2012	Training / survey - Birds	Fenland District	Barkers Lane, March	4	0	09.45 - 12.45	12	0
17/11/2012	Training / survey - Birds	Fenland District	Knightsend Road, March	4	0	12.45 - 15.45	12	0
21/11/2012	Training / survey - Birds	South Cambridgeshire District	Landbeach, St Worts Meadow	5	0	09.45 - 12.15	12.5	0
24/11/2012	Training / survey - Birds	South Cambridgeshire District	Rampton, Giants Hill/Churchyard	6	0	09.45 - 12.15	15	0
24/11/2012	Training / survey - Birds	East Cambridgeshire District	Witchford, PROW	5	0	13.15 - 16.00	13.75	0

28/11/2012	Training / survey - Birds	Fenland District	Christchurch	2	0	09.45 - 12.30	5.5	0
28/11/2012	Training / survey - Birds	Fenland District	Christchurch	2	0	13.00 - 15.30	5	0
22/02/2013	Training / survey - Toad Patrols	South Cambridgeshire District	Histon Guided Busway	8	2	17.30 - 19.30	16	4
02/03/2013	Amphibian Survey	Huntingdon District	Priory Hill Park, St Neots	2	0	10.00 - 15.00	10	0
09/03/2013	Amphibian Survey - Isleham	East Cambridgeshire District	East Fen Road, Isleham	2	0	10.00 - 12.00	4	0
16/03/2013	Amphibian Survey	Fenland District	Barkers Lane, March & Wisbech Road, March	7	0	10.00 - 13.00	15	0
16/03/2013	Amphibian Survey	Fenland District	Ramsey	N/A	N/A	Cancelled (due 14-16.30)	N/A	N/A
17/03/2013	Amphibian Survey - Guyhirn	Fenland District	Guyhirn	2	0	10.00 - 13.30	7	0

17/03/2013	Amphibian Survey - Whittlesey	Fenland District	Whittlesey	3	0	14.30 - 17.00 (shortened by poor weather 16.30)	6	0
21/03/2013	Water Vole / Otter Training	Fenland District	March	14	1	18.00 - 21.00	42	3
23/03/2013	Water Vole / Otter Training/survey	Fenland District	March	10	1	10.00 - 12.30	25	2.5
23/03/2013	Amphibian Training/Survey	South Cambridgeshire District	Cambourne	8	1	15.00 - 18.30 (6 - 9pm cancelled due to freezing weather/snow)	28	3.5
24/03/2013	Amphibian Training/Survey	South Cambridgeshire District	Rampton	4	0	10.00 - 12.00	5.5	0

24/03/2013	Amphibian Survey - Oakington	South Cambridgeshire District	Oakington	N/A	N/A	cancelled - weather	N/A	N/A
26/03/2013	Amphibian Survey - Woodhurst	Huntingdon District	Woodhurst	N/A	N/A	cancelled - weather	N/A	N/A
27/03/2013	Amphibian Survey - Landbeach	South Cambridgeshire District	Landbeach	N/A	N/A	cancelled - weather	N/A	N/A
04/04/2013	Amphibian Training/Survey	Fenland District	Church End, Parson Drove	10	0	17.15 - 21.00	37.5	0
06/04/2013	Amphibian - GCN Training/Survey	Peterborough	Railworld & Hampton	2	1	09.30 - 21.30	24	12
09/04/2013	Amphibian Survey	East Cambridgeshire District	Witchford	9	0	19.00 - 21.00	18	0
12/04/2013	Water Vole / Otter Training/survey	South Cambridgeshire District	Swavesey	2	1	10.00 - 16.00 (shortened to 14.00 due to bad weather)	8	4

13/04/2013	Water Vole / Otter Training/survey	Fenland District	Benwick	7	0	10.00 - 16.30	25.75	0
17/04/2013	Amphibian Training / Survey	South Cambridgeshire District	St Worts Meadow, Landbeach	11	1	19.00 - 21.00	19.25	1.75
18/04/2013	Meeting & Training / survey - amphibians - Bassingbourn & Kneesworth Conservation Group	South Cambridgeshire District	Bassingbourn	7	0	16.15 - 18.15	14	0
19/04/2013	Water Vole Training / Survey	Fenland District	Church End, Parson Drove	6	0	10.00 - 16.30	30.75	0
22/04/2013	Amphibian Training / Survey	Huntingdon District	Woodhurst Village hall	10 adults, 1 child	0	19.00 - 21.00	22	0
25/04/2013	Amphibian Training / Survey	Huntingdon District	Brampton Parish huntingdon eve - Hinchinbrooke	14	0	19.30 - 21.30	28	0
26-27/04/2013	Training / survey - Small Mammals	Huntingdon District	Whitehall Farm, Pondersbridge	5 (fri), 6(sat)	0	19.30 - 21.00, 07.30 - 09.30	17	0

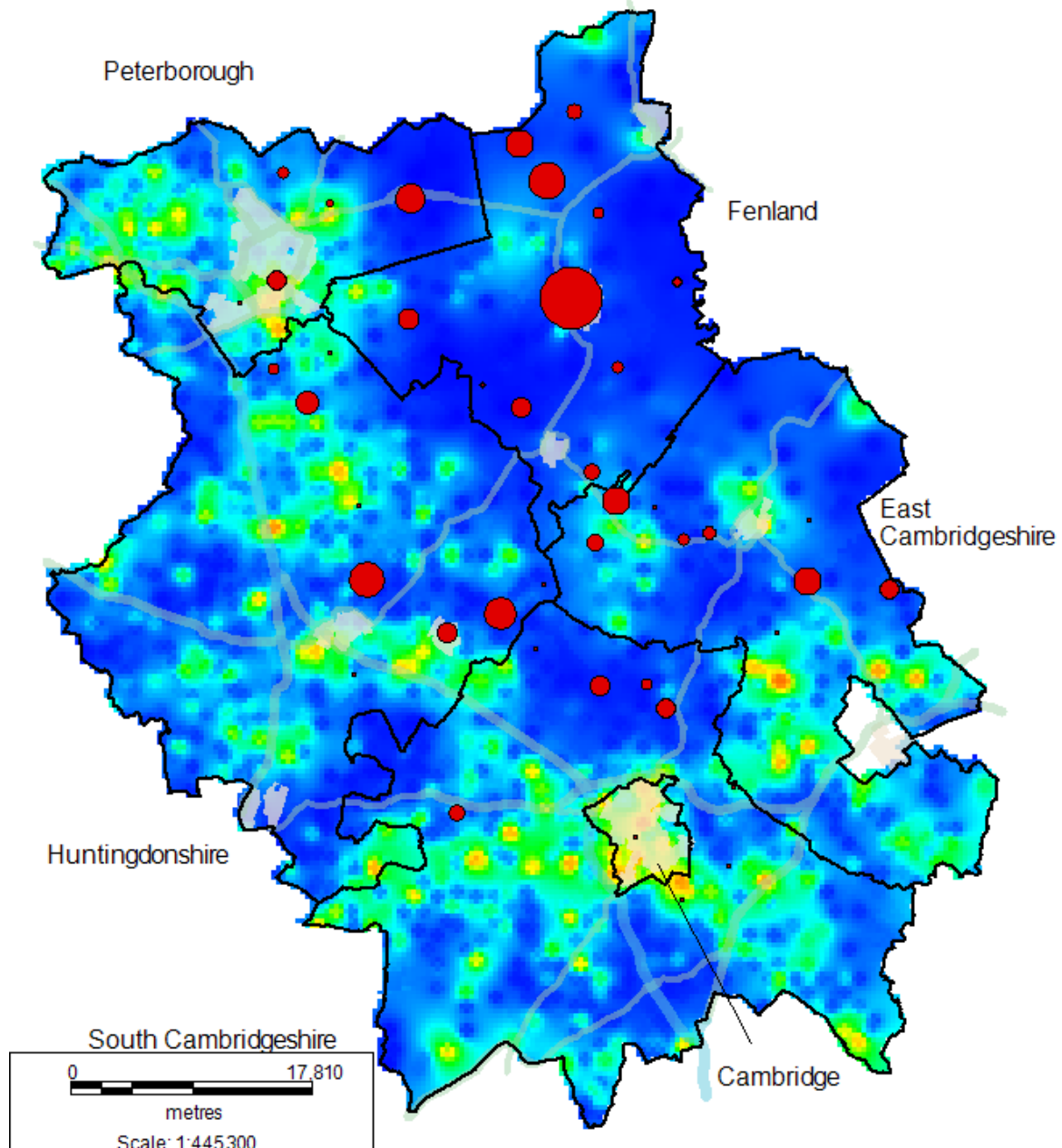
27/04/2013	Training / survey - Water Voles	Huntingdon District	Whitehall Farm, Pondersbridge	4	0	09.30 - 13.30	13.5	0
03-04/05/2013	Training / survey - Small Mammals	East Cambridgeshire District	South Angle Farm, Soham	4 (eve), 5 (morn)	0	19.45 - 21.15, 07.00 - 09.00	20	0
04/05/2013	Training / survey - WV/General	East Cambridgeshire District	South Angle Farm, Soham	4	0	10.00 - 13.15	14	0
09/05/2013	Training / survey - Butterflies	Fenland District	Christchurch Churchyard	11 children, 3 adults	0	15.15 - 16.30	17.5	0
10/05/2013	Training / survey - Butterflies & Plants	South Cambridgeshire District	Cottenham Lode	2	1	11.00 - 15.45	9.5	4.75
13/05/2013	Training / survey - Woodcraft children	Cambridge City	Coldham Common Cambridge	4 children, 3 adults due to poor weather	0	18.15 - 19.30	8.75	0
14/05/2013	Training / survey - Butterflies	Peterborough	Priors Fen, Thorney	6, cool partial drizzle	1	11.00 - 14.00	18	3

17/05/2013	Training / survey - Butterflies	South Cambridgeshire District	Meldreth	8	0	11.00 - 14.00	21.75	0
18/05/2013	Training / survey - Butterflies & Plants	Fenland District	North of Whitemoor Prison	5	2	11.00 - 14.00	13	6
19/05/2013	Training / survey - Butterflies & Plants	East Cambs District	Isleham LNR	2 children, 3 adults	0	11.00 - 13.30	12.5	0
22/05/2013	Training / survey - Water Voles	Fenland District	Christchurch	Not enough interest	0	10.00 - 15.00	0	0
21/06/2013	Training / survey - Plant	Fenland District	Co-op Farm	4 booked, no-one turned up	0	10.00 - 15.00	0	0
06/06/2013	Training / survey - Dragonflies	Fenland	Norwood Road Reserve, March	7	1	14.00 - 16.00	14	2

Appendix 5 shows the school/youth group visits,

Date	Event	District	Place	Number present	Trainers/Helpers	Activity times	Total Vol Hours	Total Trainer Hours
22/10/2012	Outreach session - school - (Woodcraft)	Cambridge City	St Matthew's Church Hall, Cambridge	11	N/A	18.00 - 19.30	16.5	N/A
28/01/2013	Lionlearners mtg	East Cambridgeshire District	Angles Farm, Soham	1	N/A	09.00 - 10.30	N/A	N/A
06/03/2013	Stanground Ponds - children engagement/newts training	Peterborough	Stanground	29 + 6 adults	2	13.30 - 15.00	52.5	3
13/03/2013	Assembly Duke of Bedford Primary School, Thorney	Peterborough	Thorney	100+	N/A	10.15 - 10.45	N/A	N/A
14/03/2013	Christchurch school, training/survey - general	Fenland District	Christchurch	8 + 2 adults	N/A	15.00 - 16.15	12.5	N/A

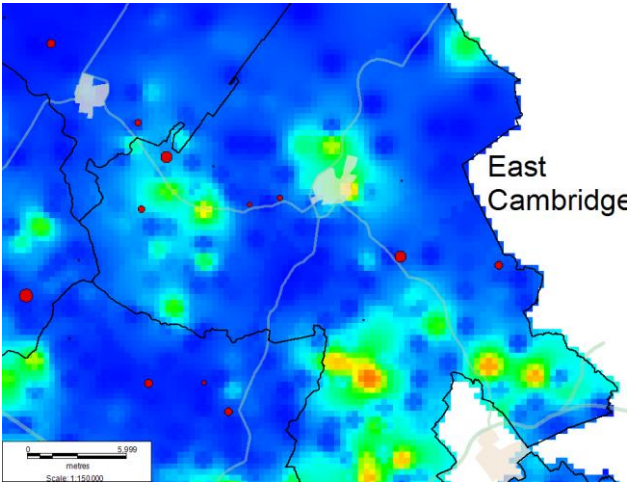
Appendix 6 maps the records by parish from the events and also individually by trainees away from event days, shown for the whole county and then focussing in on the different districts to give more context. The red dots show recording effort by our volunteers, in proportion to the records gained in that parish



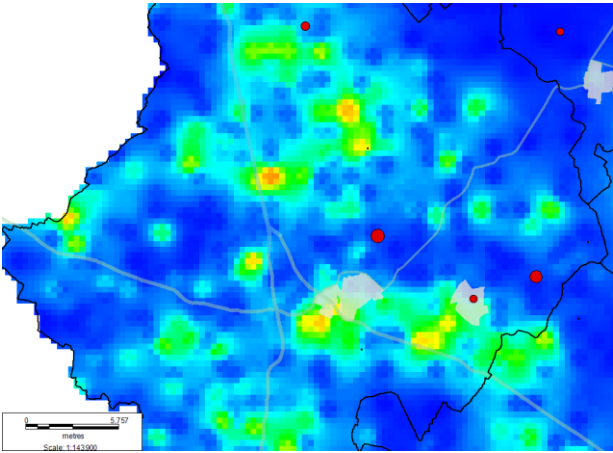
Supported by  
**The National Lottery**<sup>®</sup>  
through the Heritage Lottery Fund



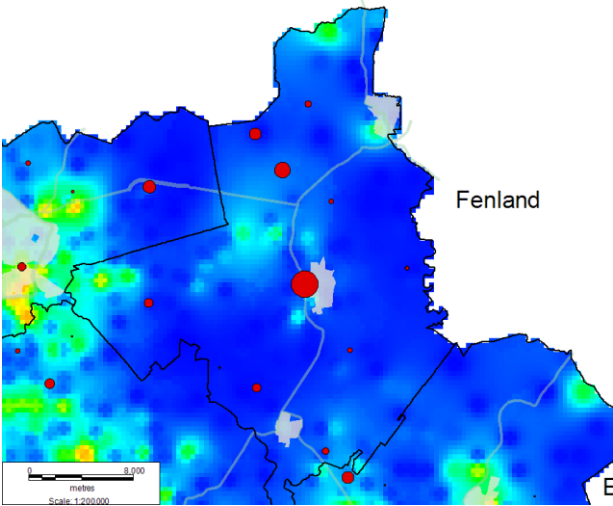
Appendix 6 cont'd maps showing our records and recorders in context of the recording gap analysis performed at the outset of the project



East Cambridgeshire

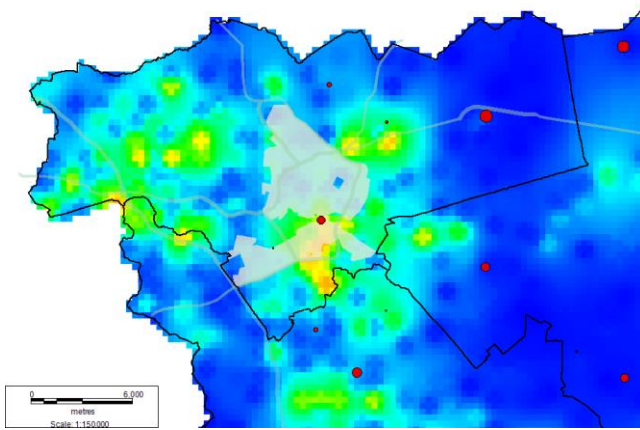


Huntingdonshire



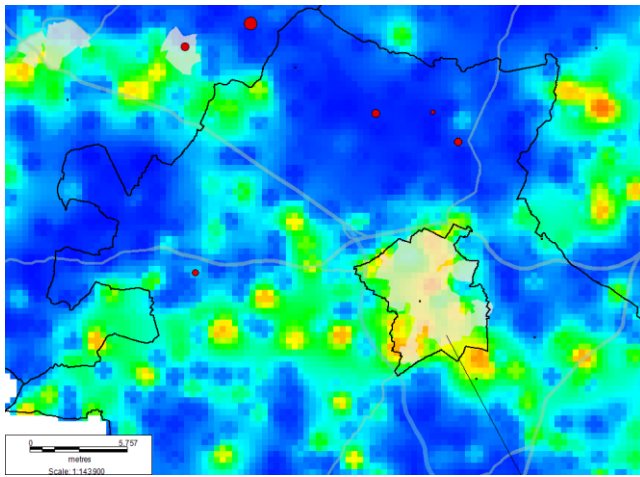
Fenland District

Peterborough



Appendix 6 cont'd maps showing our records and recorders in context of the recording gap analysis performed at the outset of the project

Peterborough Unitary



Cambridge/South Cambridgeshire